

Route 130, Union Landing Road to Wharf Street

Delran & Cinnaminson Townships,
Burlington County

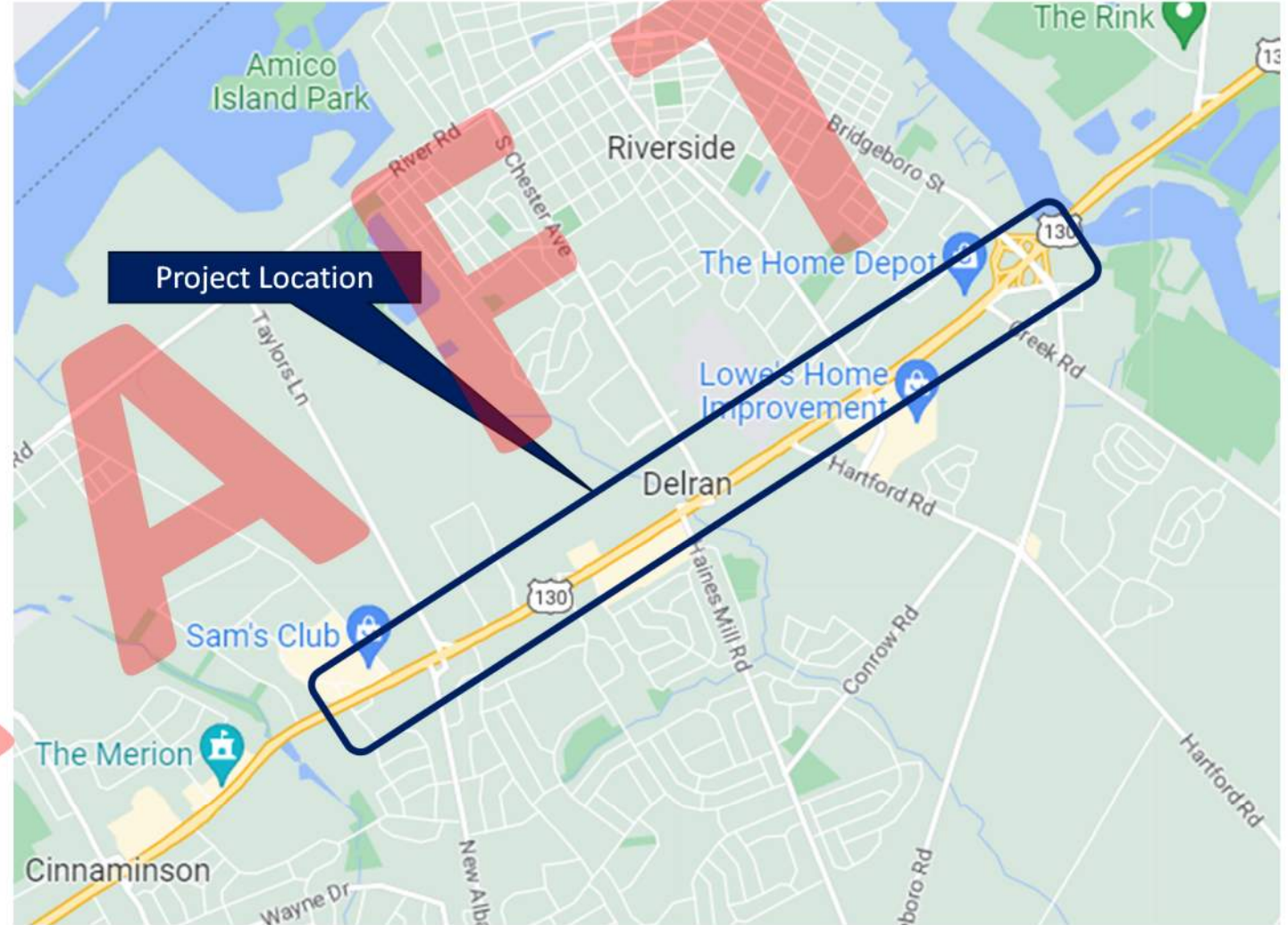
Cinnaminson Township Council Meeting

April 15, 2024



Project Location

- Route 130, Main Line Drive/Andover Road to Rancocas Creek Bridge
 - MP 38.23 to MP 41.05
- Delran and Cinnaminson Townships, Burlington County, NJ



Aerial View



Begin Project
MP 38.23

End Project
MP 41.05

Project Background

- Full scope Concept Development Study focused on safety improvements for bicycles/pedestrians as well as traffic safety and operations
- Between 2017-2020 there were 7 crashes involving pedestrians, 2 bicyclist crashes, and 4 fatal crashes (2 pedestrian & 2 vehicular) resulting in the corridor rating high for pedestrian crashes



Goals and Objectives

- Goal of this project is to recommend and advance safety improvements focused on bicycles/pedestrians, as well as traffic safety and operations
- The objectives are as follows:
 - Provide FHWA proven countermeasures to improve safety
 - Address contributing factors to higher-than-average crash rates
 - Improve pedestrian accommodations including ADA compliant ramps, completing missing segments of sidewalk, and providing driveway crossings
 - Improve bicycle safety
 - Upgrade traffic signals to current MUTCD, NJDOT, and ADA design standards
 - Improve intersection lighting to current NJDOT standards
 - Improve traffic operations at signalized intersections

Community Involvement

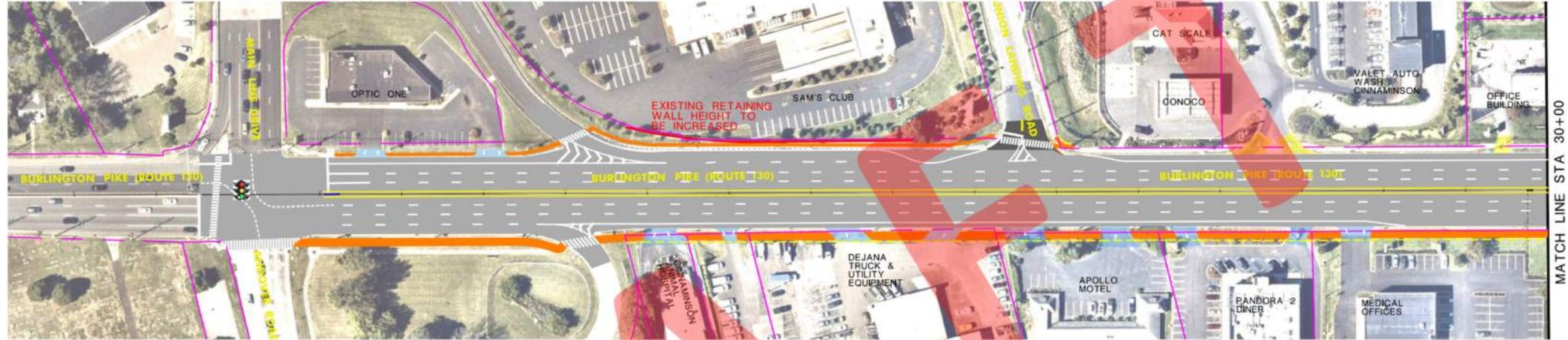
- Pedestrian Road Safety Audit - 11/2/22
 - Performed field visit to review specific areas of concern
 - Review of potential FHWA approved safety county measures to be implemented
- Local Officials Briefing #1 - 6/27/23
 - Presented Project Purpose & Need
 - Discussed results of data collection tasks
 - Presented potential designs to be included in development of alternatives
- Local Officials Briefing #2 - 3/12/24
 - Discussed various alternatives considered
 - Presented Preliminary Preferred Alternative (PPA)
- Public Information Center (May 2024)



Preliminary Preferred Alternative

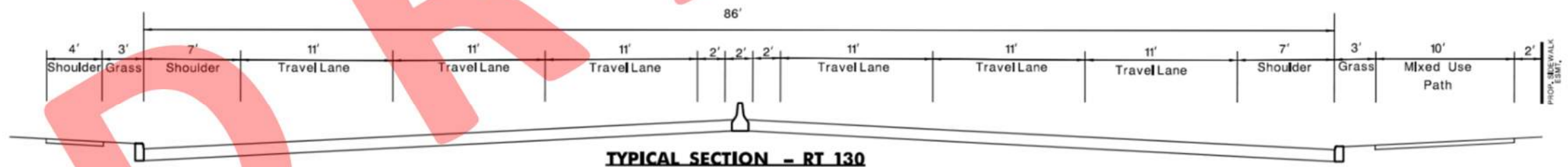
- Shared Use Path with Various Safety Improvements
 - Install 10ft wide shared use path on northbound side
 - Provides continuous bicycle/pedestrian route from Mainline Drive to Rancocas Creek Bridge, with connection to Bridgeboro Road
 - Maintain existing lane and shoulder widths
 - Traffic signal timings will be optimized for corridor operations
 - Timing will be modified at Route 130 & Taylors Lane to create a “lead left” phase for cars turning from eastbound Taylors Lane to Route 130 northbound
- Why was this alternative selected?
 - Meets the Project Purpose & Need
 - Provides safe route for both bicycles and pedestrians outside of the roadway as desired for high-speed, high-volume roadways
 - Reasonable construction cost
 - +/- \$7.5 Million
 - Supported by NJDOT Subject Matter Experts over other alternatives

Preliminary Preferred Alternative



Preliminary Preferred Alternatives

- Various Other Improvements Included
 - Complete missing segments of sidewalk
 - Upgrade curb ramps for ADA compliance
 - Stripe high visibility crosswalks
 - Upgrade/replace traffic signals and modify timings to improve operations
 - Install backplates at all traffic signals
 - Upgrade intersection lighting at traffic signals
 - Geometric improvements at Creek Road to eliminate weaving movement
 - Improve corner radius at Union Landing Road for large trucks
 - Upgrade traffic signals and median openings at midblock crossings
 - Install crash cushions at ends of median barrier



PPA Impacts

- Construction Staging & MPT
 - Staged construction completed with shoulder and/or single lane closures during working hours
 - Permitted lane closure hours overnight or midday only
 - Detour Creek Road/Bridgeboro Road ramp traffic during intersection modifications
 - Commercial driveway access needs to be coordinated with property owners (nighttime construction likely required)
- Right of Way
 - 5 partial fee takings
 - 36 permanent sidewalk easements
 - Reconstruction of over 80 driveway aprons
 - Potential impacts to parking at up to 6 commercial properties
 - Some will depend on grading design during FD phase



PPA Impacts

- Utilities
 - Relocate 8 utility poles
 - Install new lighting at traffic signals
- Environmental
 - Flood Hazard & Freshwater Wetlands permits needed for bridge extension - Structure Number: 0316151 (MP 39.44 near Haines Mill Rd)
 - Categorical Exclusion anticipated under NEPA
 - Major Development requiring stormwater management
 - Install pervious path with stone bed to absorb/recharge runoff
 - Soil testing will be done during FD



Schedule/Next Steps

- Complete Concept Development
 - Obtain Resolutions of Support from Municipalities
 - Hold Public Information Center
 - Complete CD Report
 - NJDOT Approves CD Report and authorizes advancement to Preliminary Engineering

PROJECT TIMELINE

Complete CD
(Summer 2024)

Preliminary Engineering
(Fall 2024)

Final Design
(Fall 2026)

Construction
(Spring 2029)

Questions/Discussion



Project Contacts:

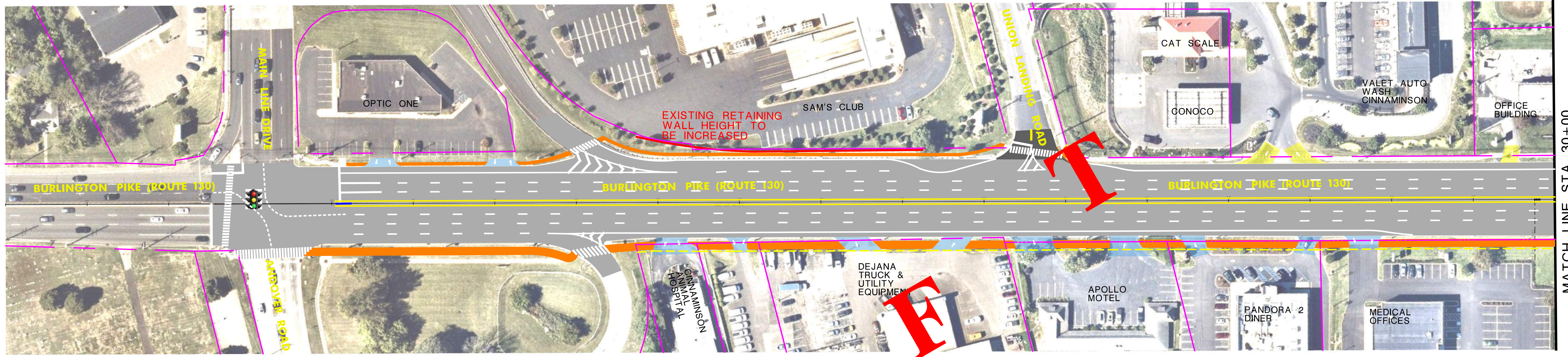
JAMES McALLISTER

PROJECT MANAGER – NJDOT

MICHAEL DROBNY, PE

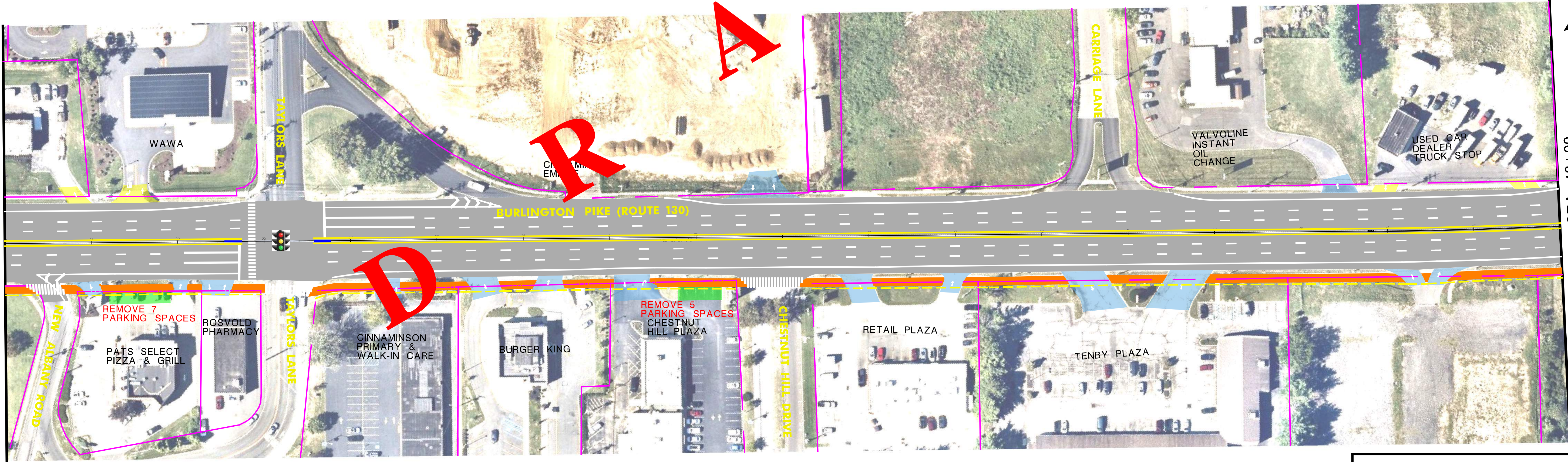
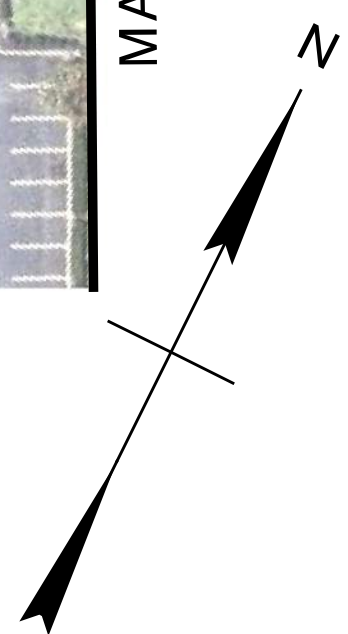
PROJECT MANAGER – FRENCH & PARRELLO ASSOCIATES





MATCH LINE STA 30+00

MATCH LINE STA 48+00



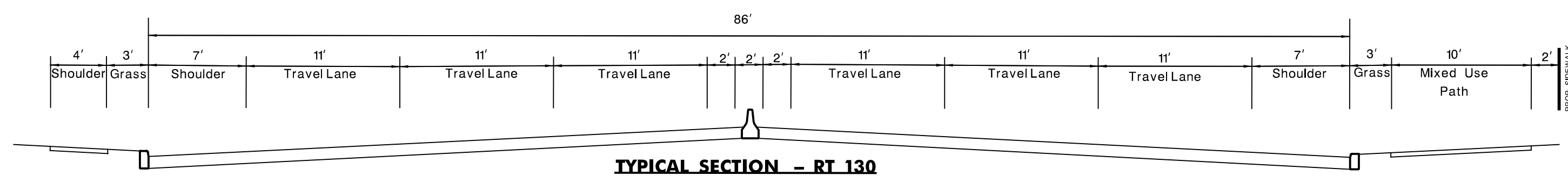
MATCH LINE STA 30+00

MATCH LINE STA 48+00



LEGEND

	EXISTING R.O.W. LINE
	PROPOSED R.O.W. LINE
	PROPOSED SIDEWALK EASEMENT
	PROPOSED SIDEWALK
	DELTRAN PROPOSED SIDEWALK
	PROPOSED CURB
	PROPOSED CRASH CUSHION
	PROPOSED STRUCTURE
	PROPOSED MILL & OVERLAY
	PROPOSED FULL DEPTH PAVEMENT
	ACCESS
	IMPACTED ACCESS OR VIOLATION
	ACCESS TO BE REMOVED
	PROPOSED GRASS



PRELIMINARY PREFERRED ALTERNATIVE



NEW JERSEY DEPARTMENT OF TRANSPORTATION

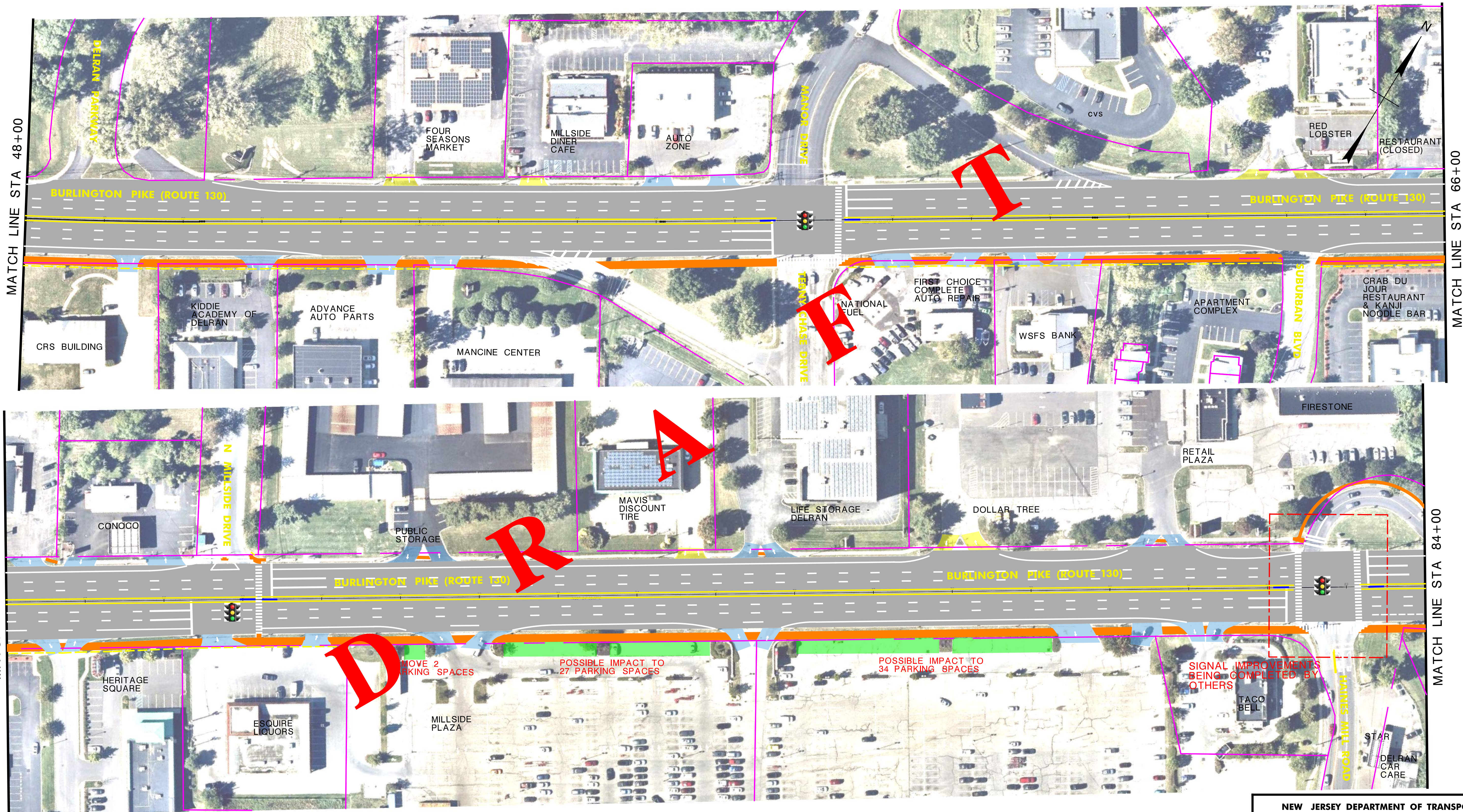
ALTERNATIVE #3

ROUTE 130

FROM UNION LANDING TO WHARF STREET

CONTRACT NO. 2114492

SEPTEMBER 2023



MATCH LINE STA 48+00

MATCH LINE STA 66+00

MATCH LINE STA 66+00

MATCH LINE STA 84+00



10/17/2023 AM
 1500 RR 34, Suite 100
 Wall, New Jersey 07719
 732.312.8600
 fpaengineers.com
 FPAengineers.com
 New Jersey • Pennsylvania • Georgia

LEGEND	
	EXISTING R.O.W. LINE
	PROPOSED R.O.W. LINE
	PROPOSED SIDEWALK EASEMENT
	PROPOSED SIDEWALK
	DELTRAN PROPOSED SIDEWALK
	PROPOSED CURB
	PROPOSED CRASH CUSHION
	PROPOSED STRUCTURE
	PROPOSED MILL & OVERLAY
	PROPOSED FULL DEPTH PAVEMENT
	ACCESS
	IMPACTED ACCESS OR VIOLATION
	ACCESS TO BE REMOVED
	PROPOSED GRASS

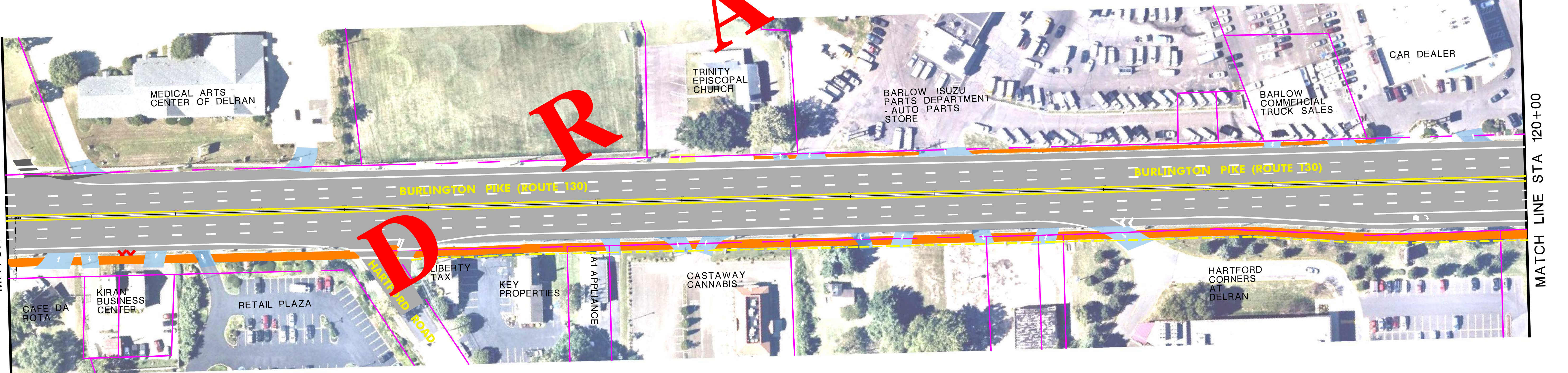
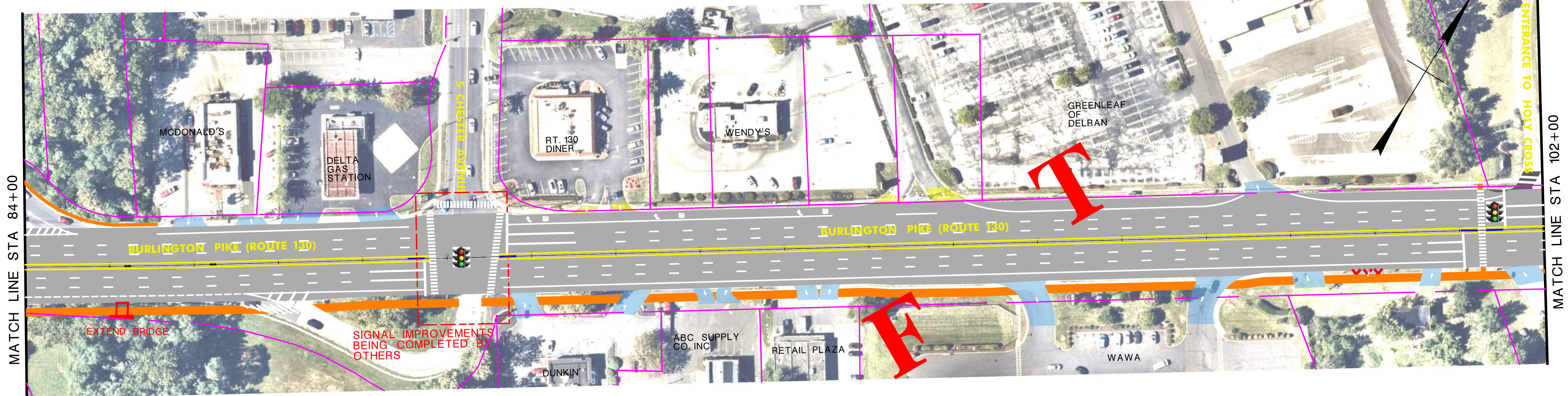
PRELIMINARY PREFERRED ALTERNATIVE



NEW JERSEY DEPARTMENT OF TRANSPORTATION

ALTERNATIVE #3
ROUTE 130
 FROM UNION LANDING TO WHARF STREET
 CONTRACT NO. 2114492





LEGEND

[Dashed line]	EXISTING R.O.W. LINE
[Solid line]	PROPOSED R.O.W. LINE
[Thin blue line]	PROPOSED SIDEWALK EASEMENT
[Thin orange line]	PROPOSED SIDEWALK
[Thin purple line]	DELRAN PROPOSED SIDEWALK
[Thin red line]	PROPOSED CURB
[Thin pink line]	PROPOSED CRASH CUSHION
[Thin yellow line]	PROPOSED STRUCTURE
[Thin grey line]	PROPOSED MILL & OVERLAY
[Thin light blue line]	PROPOSED FULL DEPTH PAVEMENT
[Thin light green line]	ACCESS
[Thin dark green line]	IMPACTED ACCESS OR VIOLATION
[Red 'X' pattern]	ACCESS TO BE REMOVED
[Green pattern]	PROPOSED GRASS

PRELIMINARY PREFERRED ALTERNATIVE

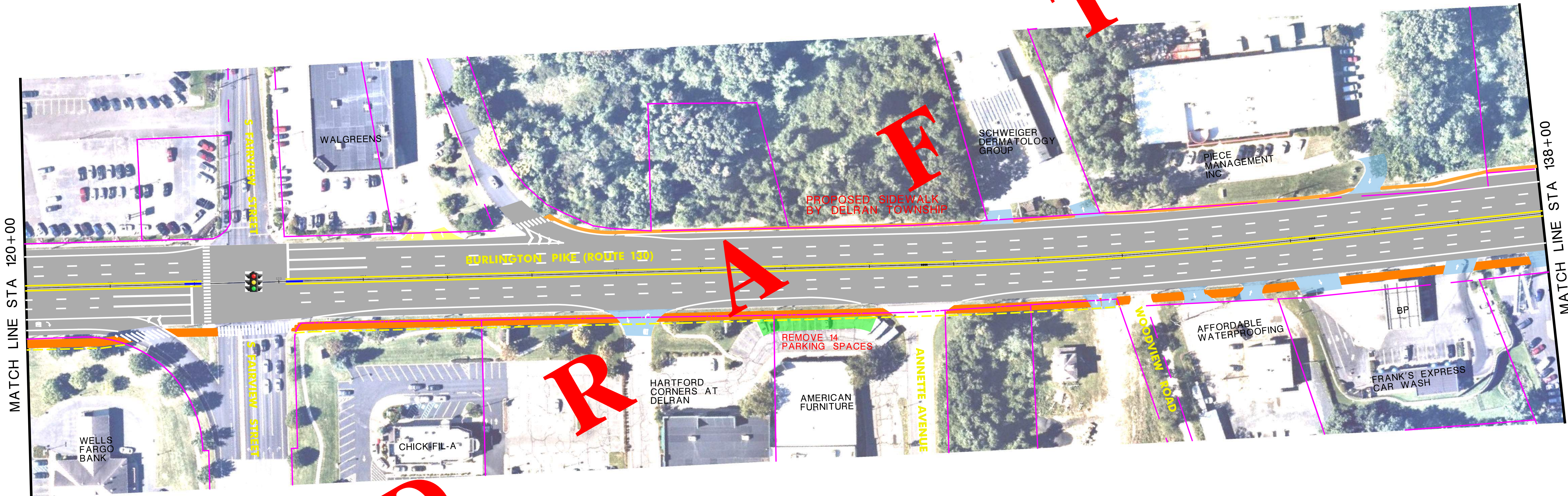
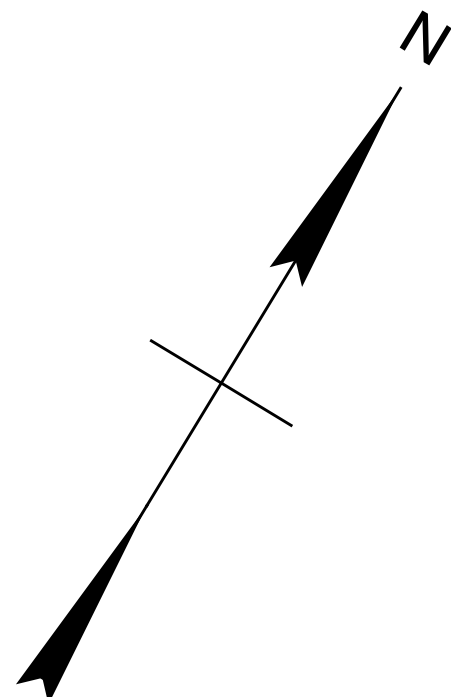


NEW JERSEY DEPARTMENT OF TRANSPORTATION

**ALTERNATIVE #3
ROUTE 130
FROM UNION LANDING TO WHARF STREET
CONTRACT NO. 2114492**



10/17/20 AM 4:36:03 PM 10/17/2013 1:03:03 PM - NDOT General Engineering 17001.000 - Route 130 Union Landing to Wharf St. CD-Study/CD/DOCS/Sheet Files/17001.000 - alternative #3 (10/17/2013)



MATCH LINE STA 120+00

MATCH LINE STA 138+00

BURLINGTON PIKE (ROUTE 130)

S FAIRVIEW STREET

S FAIRVIEW STREET

PROPOSED SIDEWALK BY DELRAN TOWNSHIP

REMOVE 14 PARKING SPACES

WOODPOLE ROAD

BP

FRANK'S EXPRESS CAR WASH

10/17/23 AM
1600 RI 34, Summit Ave., Wall, NJ 07719
732.312.9800
FPA@frenchandparrello.com

Legend

	EXISTING R.O.W. LINE
	PROPOSED R.O.W. LINE
	PROPOSED SIDEWALK EASEMENT
	PROPOSED SIDEWALK
	DELRAN PROPOSED SIDEWALK
	PROPOSED CURB
	PROPOSED CRASH CUSHION
	PROPOSED STRUCTURE
	PROPOSED MILL & OVERLAY
	PROPOSED FULL DEPTH PAVEMENT
	ACCESS
	IMPACTED ACCESS OR VIOLATION
	ACCESS TO BE REMOVED
	PROPOSED GRASS

PRELIMINARY PREFERRED ALTERNATIVE



NEW JERSEY DEPARTMENT OF TRANSPORTATION

ALTERNATIVE #3

ROUTE 130

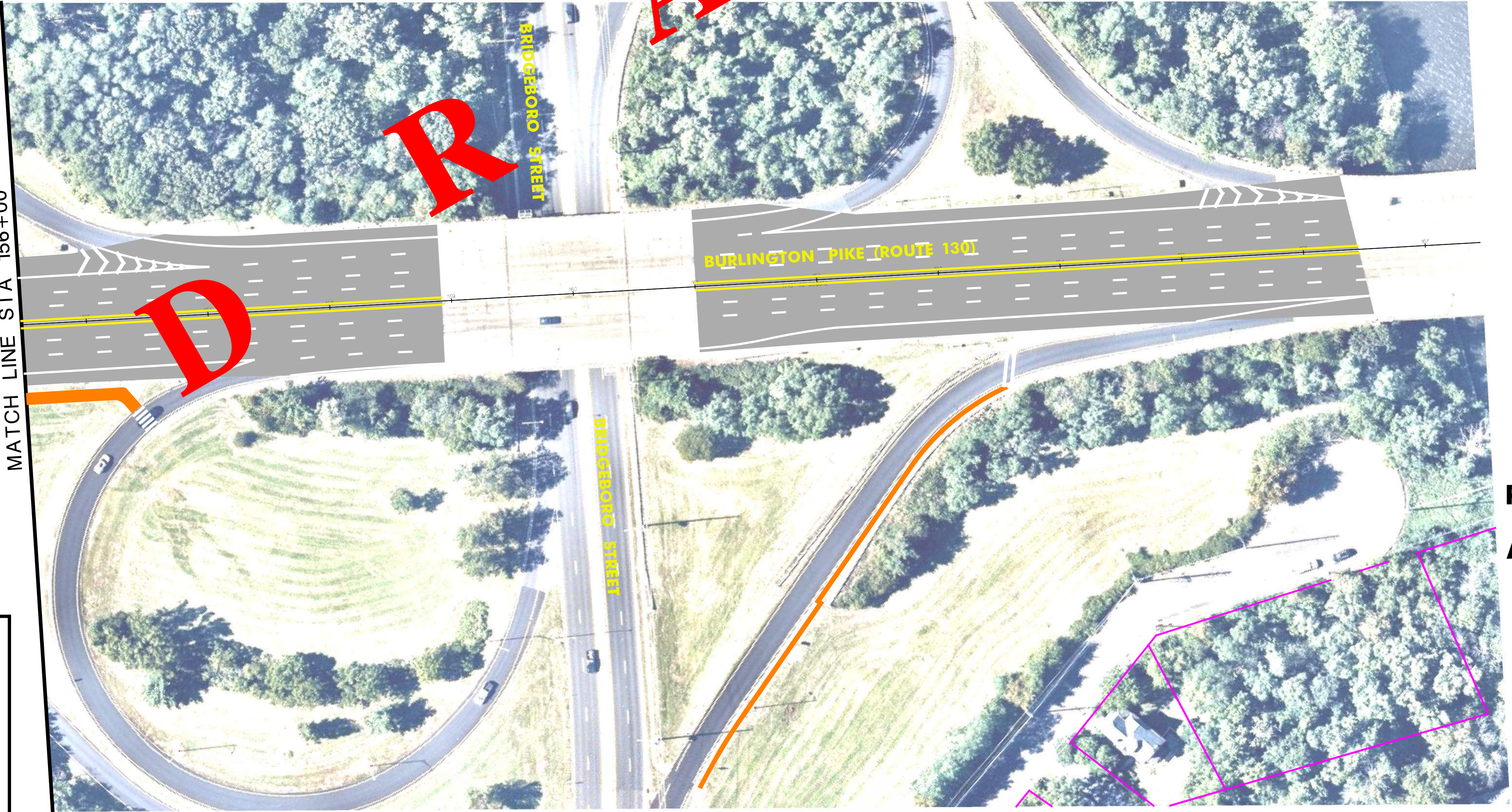
FROM UNION LANDING TO WHARF STREET

CONTRACT NO. 2114492

FPA
FRENCH & PARRELLO
ASSOCIATES

SEPTEMBER 2023

4
5



LEGEND	
(Pink dashed line)	EXISTING R.O.W. LINE
(Yellow dashed line)	PROPOSED R.O.W. LINE
(Orange dashed line)	PROPOSED SIDEWALK EASEMENT
(Blue dashed line)	PROPOSED SIDEWALK
(Light Blue dashed line)	DELTRAN PROPOSED SIDEWALK
(Red dashed line)	PROPOSED CURB
(Red dashed line)	PROPOSED CRASH CUSHION
(Red dashed line)	PROPOSED STRUCTURE
(Red dashed line)	PROPOSED MILL & OVERLAY
(Red dashed line)	PROPOSED FULL DEPTH PAVEMENT
(Red dashed line)	ACCESS
(Red dashed line)	IMPACTED ACCESS OR VIOLATION
(Red dashed line)	ACCESS TO BE REMOVED
(Red dashed line)	PROPOSED GRASS

**PRELIMINARY
PREFERRED
ALTERNATIVE**



NEW JERSEY DEPARTMENT OF TRANSPORTATION

ALTERNATIVE #3

**ROUTE 130
FROM UNION LANDING TO WHARF STREET
CONTRACT NO. 2114492**

